

# DROMANA COMMUNITY GARDEN

Marna Street - opposite the Tennis Courts

Ph: 0417 467 734



## Let's all dig in and help out!

We regularly meet on the Second Tuesday of the month at 5 pm for a 5.30 pm committee and planning meeting at the Dromana Community House , 15 Gibson street, Dromana.

We gather at the garden as a group and as individuals, to work on producing a share crop of fruits and vegetables as well as learning about gardening. We also hold regular working bees. The Dromana Community House lend a hand on Tuesdays from 9am to 12 noon

We need many hands, hearts and minds to grow the garden, and importantly, many voices.

The future holds many possibilities for new community projects and partnerships. Here are a few we have in the pipeline.....

- swale drain planting and sustainability
- install water tanks and new shed
- create living and woven wall for our shelter
- build more garden beds, including table top accessible raised beds
- landscape more garden spaces including a sensory garden and orchards
- extend compost areas to include worm farms and weed and compost tea stations
- monthly workshops
- children's events and garden
- artist in residence workshops

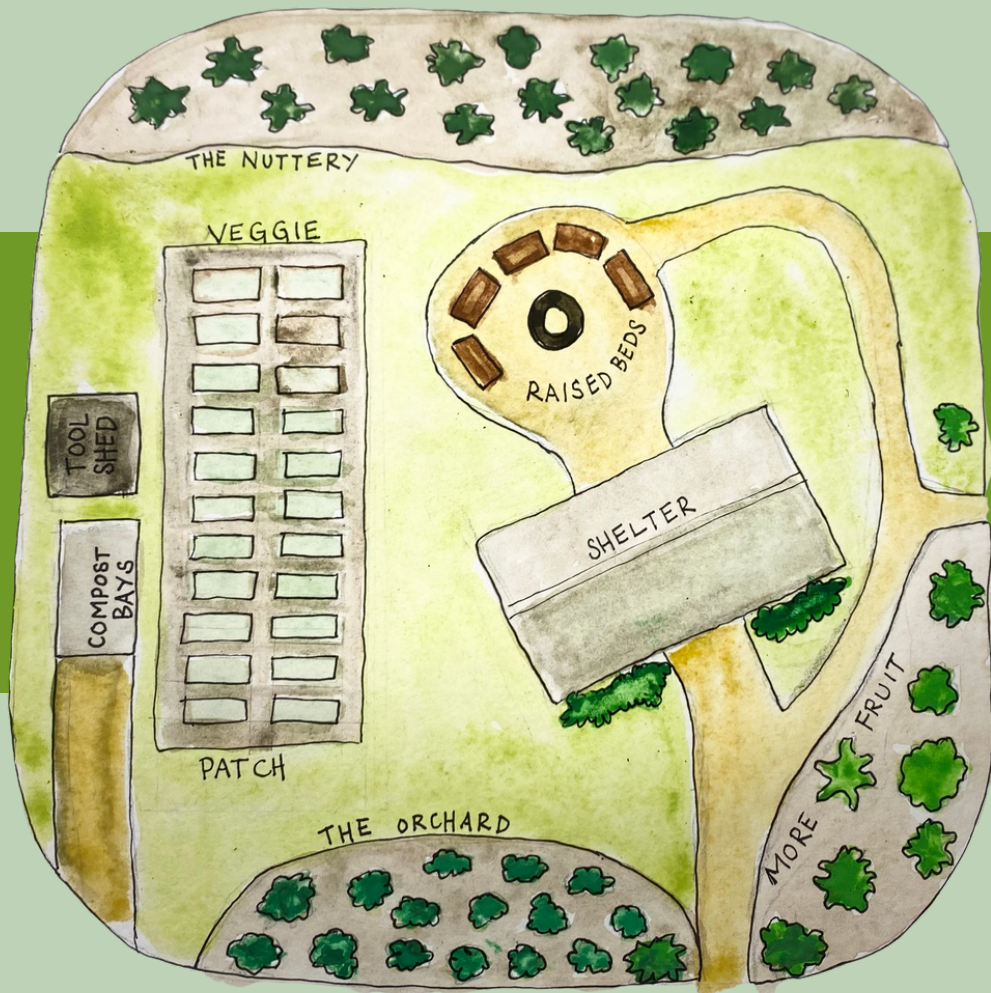


*Dromana Community Garden*

## You can contribute fruitfully at the working bees by:

- Signing in and checking the tasks for the day located at the shed
- Wearing closed toe shoes, sunscreen, a sun hat, protective gear when pruning, mowing and whopper snipping
- Following the signage - garden beds have a natural cycle so please observe
- Enjoying the space and leaving it clean and tidy.
- Acting as guardians and reporting back to the committee
- Considering alternatives to the use of plastics





# Join

## Join the Dromana Community Garden

**COMMITTEE MEETINGS**  
**First Tuesday of the month**  
 (unless otherwise advised)

**Dromana Community House** 15 Gibson street, Dromana 3943

**dromanacommunitygardens@gmail**

\$10 annual registration fee applies

Pay direct Bendigo Bank  
 Dromana Community Garden  
 BSB: 633000.Acc: 150129963

# About us

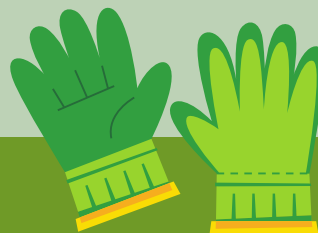
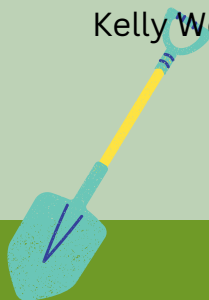
We are a community based garden and guardians of Mornington Peninsula Shire Council space

We share our home grown produce at the working bee: you can bring along bounty from your own garden to share!

We believe a garden is a place of enjoyment sharing and learning.

We fundraise through our stall at the Dromana Rotary Community Market and other local events.

Kelly World - President



**PARTNERING**

**DROMANA**  
 COMMUNITY HOUSE  
 FIFTEEN GIBSON STREET

**Website**

<https://www.dromanacommunityhouse.com/dromana-community-garden>

