

Dromana Community House

Neighbourhood House
Little Gum Early Learning
Food Rescue and Share

Fifteen Gibson
street
0417 467 734
January to April 2024

Contact Us

0417 467 735

dromanacommunityhouse@gmail.com

dromanacommunityhouse.com



Located onsite



Families,
Fairness
and Housing



Dromana Community House respectfully acknowledges the Traditional Owners of the land where we are located, and Bunurong Boon Wurrung peoples of the Kulin Nation and pay respect to their Elders past and present.

We promise to continue caring for – The Land / the water ways / the sky/the animals / the people.



DO MORE OF WHAT YOU

Love in 2024



DROMANA

COMMUNITY HOUSE
FIFTEEN GIBSON STREET

PH: 0417 467 734

Dromana Community House

Enrol now!

Offering a range of affordable activities including health and well-being, art, craft, and support for the community
Our Food share is growing as food prices rise and families are in need.

The Little Gum Early Learning Centre is an integral part of the "House"

Office hours: 9 am to 2.30 pm Monday to Wednesday

Annual Registration fee

We appreciate your fees are paid in advance

Debit or Credit Card preferred

Phone: 0417 467 734

Bank details: BSB 633 000 Account # 150336 014

ACTIVITY FEES

A one off annual fee of ten dollars is required to be paid by all, enrolling in activities.

Little Gum Early Learning

\$30 annual registration per child or \$40 per family plus \$75 deposit which comes off your fees.

On Line enrolment

Coming soon!

We offer low cost activities and prepayment secures your place. Prices are as advertised and we do require minimum bookings for activities to proceed. Full refunds will be given when an activity is cancelled.



At Little Gum we:-

- Provide a safe and welcoming environment where children are encouraged to grow and develop into confident little learners
- Believe in inclusion and recognize that each child is their own person, celebrating the special characteristics that make them unique.
- Follow the Early Learning Years Framework.
- Provide Occasional Childcare and are licensed with Children's Services Victoria.
- Offer up to 16 places per day.
- Offer Childcare Benefits to reduce your fees.

Fees: \$75 per session - before Childcare Rebates
\$30 annual registration per child or \$40 per family



15 Gibson Street, Dromana Ph: 0417 467 734

Loving and Greening our community

Garden Gathering

Visit local gardens and nurseries of interest with these keen gardeners
Cost: \$5 plus entry fees if applicable
\$10 Annual registration fee

Dromana Community Garden

We meet at Marna Street
Tuesdays: 9 am to 1 pm weekly
Sundays: 10 am to 12 pm
2nd in month
\$10 annual registration
Pay direct to the Garden
BSB: 633000.Acc: 150129963

The Community Plate

We are all connected to food that is local, healthy and abundant., check out the Facebook page.

The Seed Pod Garden

Working bees on Wednesdays
2.30 pm to 3.30 pm in our very own garden at the rear of the House



Monthly outings
to local gardens
and nurseries

Neighbourhood House

Monday

Little Gum Early Learning - 9 am to 2 pm
Pop up food cart - 9.30 am
Family History - 9 am to 12 noon - \$5
French Club Lunch - 12 to 1pm - \$5
Art Studio with Julie Hamilton 1 pm to 4 pm - \$120 four sessions
Book Club - First of the month - \$5
Homework club - 4pm - Dromana Lions Club

Tuesday

Little Gum Early Learning - 9 am to 2 pm
Pop up food cart - 9.30 am
Community Garden working bee - 9 am to 1 pm
Tuesday walking - 9.15 am Morning coffee - 10.15 am - \$10 per year
Wicking beds and Feng Shui TBA
Cafe Catch up - 1st and 3rd of the month
Hooks and Needles - 12 noon to 1.30 pm - \$3
Watercolour and Acrylic with Beatrice - 12.30 to 3.30 pm - \$160
Garden Gathering - 2 pm Last of the month - \$5
Community Garden Committee - 5.30 pm - First/month

Wednesday

Little Gum Early Learning - 9 am to 2 pm
Pop up food cart - 9.30 am
Supporting students Active Volunteering with Tracey
Let the blokes "cook up a storm" - \$5
Men's lunch box - \$5 Term 2
Hikers - ask for the schedule - \$10 annual plus rego \$10
Boomerang Bags/ Patched and Pieced - 12 noon to 3 pm
Seed pod garden tending - 2.30 pm to 3pm
Homework club - 4pm - Dromana Lions Club

Thursday

Little Gum Early Learning - 9 am to 2 pm
Dromana Food Share - 10 am to 10.30 am - no cost
Dromana Community Singers - \$5 1.30 pm to 3. pm
Grab and Go meals - 4pm - 4.30 pm - no cost

Friday

Little Gum Early Learning - 9 am to 2 pm
Pop up food cart - 9.30 am
Mosaics - 9.30 am - 11.30 am - \$40 for four weeks



Artistic Pursuits

Monday

Art Studio

Julie Hamilton, supports and guides you while building your individual painting style.

Time: 1 pm to 4 pm - continues in the school holidays

Fees: \$120 per 4 weeks plus \$10 annual rego.

Cricut - We have the machine ready to use!

Easy Cricut projects for beginners are the perfect place to start! Get your feet wet with fun & simple Cricut crafts

Time: 1 pm to 3 pm \$5 plus your material, plus \$10 annual rego

Introduction Date TBA Fee \$10

Tuesday

Watercolour sessions

Beatrice Manoukian inspires this creative group of artists using pencils, acrylics and watercolours.

Time: 12.30 to 3 pm Fees: \$160 for eight sessions . plus \$10 annual rego.

Watercolour Workshop with Beatrice.

Book now for the next scheduled workshop

Friday 12 noon to 3 pm Fee: \$50 plus \$10 annual rego

Hooks and Needles

Join us to learn basic knitting/crochet

Time: 12 noon to 1.30 pm Fee: \$3 plus \$10 annual rego.

Wednesday

Boomerang Bags

We gather to sew bags from recycled fabric.

Time: Wednesdays from 10 am to 3 pm No cost \$10 annual rego

Patched and Pieced with Annie

Bring along your UFO's

Time: 12 pm to 3 pm Fee: \$3 \$10 annual rego

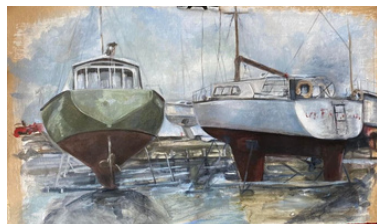
Friday

Mosaics with Elaine Baker

For beginners includes basic supplies.

Time: 9.30 am to 11.30 am

Fee: \$40 - 4 weeks plus \$10 annual rego



Lifelong Learning

Monday

Family History with Lynne McKenzie

Find out how to research your family tree and share the results in this supportive group .

Time: 9 am - 12 noon. Fee: \$5 plus \$10 annual rego.

Dejeuner Cafe - Lunch included

Stay on for lunch. and converse in French

Time: Monday starting 12 noon to 1 pm

Fee: \$5 plus \$10 annual rego.

Book Club with Liz Bentley

First of the month at 3 pm Fee: \$5 plus \$10 annual rego.

Tuesday

Be Connected Online Learning for Seniors

Monthly workshops with Sara Higgins.

Time: 9.30 to 11.30 - 19TH February.

Fee: \$6 plus \$10 annual rego.

One on One Phone/Ipad / Computer Assistance

First of the month booking essential Sara is a font of knowledge we call her Wiki her background is in desk top publishing, PR and trouble shooting.

Fee: 30 min. \$15 plus \$10 annual rego From 1 pm

Wednesday

Let the blokes " Cook up a Storm"

Wednesdays 9.30 to 1 pm - **TERM 2**

Cooking sessions for blokes who stay on to share a lunch box with other blokes

You are welcome to join in at the table from 12 noon. Take home a meal too.

Cost \$5 plus \$10 annual rego

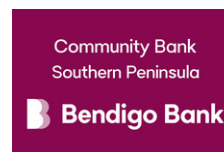
Thursday

Singing Circle Join us for a sing along and perform out and about in our community.

Time: 1.30 pm to 3 pm

Fee: \$5 plus \$10 annual registration.

Song Book \$16



Support services

Mornington Peninsula Shire Council

Link to support services



DROMANA
COMMUNITY HOUSE



CHAMPS
Community Houses around
Mornington Peninsula

PENINSULA Community WIG CENTRE

A free community service available to women living on the Mornington Peninsula experiencing hair loss due to treatment for cancer. Ph: 0407 525 119



A community initiative taking a collective approach so that we are all connected to food that is local, healthy and abundant!

VINNIES KITCHEN

Thank you
Vinnie's Kitchen for
the new fridge for our
Grab and Go Kitchen
at DCH
Vinnie's provide a
free, two-course
meal, 6 days a week.
in Rosebud



Rob Pizziol the
Dromana Community House
Food Share Coordinator

Feeling Fit and Fabulous



Tuesday Walkers

This group has been walking for many years now, along the beach boardwalk- all weather!

9.30 am- sign on at the House and return for a coffee

\$10 annual registration and \$10 for the activity per annum

Wednesday Hikers - join for itinerary.

We walk for 12 to 15 kms each Wednesday from different locations on the peninsula. Register to receive the Itinerary.

\$10 annual registration and \$10 for the activity per annum

Zumba Gold

Coming in 2024. Please register your interest Phone 0417 467 734

Let them "Cook up a Storm" for blokes TERM 2, 2024

Cooking sessions for blokes who will stay on to share a lunch box with other blokes welcome to join in at the table from 12 noon.

Wednesdays 9.30 to 12.45

Fee: \$5 plus \$10 annual rego

Foundation Bulk Food Store

Pick up your Boomerang Bag and whole foods locally

10/ 217 point Nepean road Dromana 3936

Prana Yoga and Wellness

Beach Street Yoga Collective
partners with Dromana Community House
Yoga by Donation to Dromana Community
House Food Relief.

www.pranayogaandwellness.com.au

KUZO Group training

Try one FREE CrossFit class so you can experience what it feels like to enjoy getting in shape!

Unit 1/3 Thomson Terrace Dromana

gday@kuzo.com.au

0434 963 113



Dromana Community House
is committed to
The 5 Rs: Refuse, Reduce, Reuse,
Repurpose, Recycle Australian Initiative



Blister packs recycling

Recycle the packaging that pills and tablets come in!
You drop off empty blister packs for recycling
"The money goes to help buy cushions for the patients
in the Dialysis Department at the Rosebud Hospital. It
also stops them from going into landfill" – Elaine BB
Sorting day at the House, join us!

First Wednesday of the month at 2pm

Boomerang Bags is a global, grassroots movement.

Connecting and empowering local communities to
tackle plastic pollution at its source.

We collect fabrics and repurpose into shopping bags
on Wednesdays.



Mobile recycling trailer

The Trailer will be located at the Community House
at 15 Gibson street from 4/3/2024 to 29/3/2023

The recycling trailer is available for residents to drop
off their unwanted clothing and small electrical
items.



The Little Library at 15 Gibbo

Borrow or swap a book in our little book box
which was made lovingly for us by the
Safety Beach Dromana Men's Shed

DROMANA
COMMUNITY HOUSE
FIFTEEN GIBSON STREET



Return It

RE
TURN
-IT



Drop off your eligible drink containers to the Dromana
Community House

15 Gibson street, Dromana

Together we can make a positive difference to our
community and our environment.

Victoria's Container Deposit Scheme

Get 10c back by returning eligible containers or
donate at the Dromana Return It depot'
and donate to the

Dromana Community House by scanning this bar code.



Scan this barcode to accept your
refund



13:30

Donation Partner ID
C2000009075

Dromana Return-it
32 Brasser Avenue

Dromana, VIC 3936



Ritches Loyalty card

Register your card with donations to
Dromana Community House



DROMANA COMMUNITY CO-DESIGN FORUM

- WHAT IS?**
 - WILDLIFE CORRIDOR
 - WILDLIFE TRACKS
 - WILDLIFE CORRIDOR
 - WILDLIFE TRACKS
 - WILDLIFE CORRIDOR
 - WILDLIFE TRACKS
- WHAT IF?**
 - WILDLIFE CORRIDOR
 - WILDLIFE TRACKS
 - WILDLIFE CORRIDOR
 - WILDLIFE TRACKS
 - WILDLIFE CORRIDOR
 - WILDLIFE TRACKS
- HOW?**
 - WILDLIFE CORRIDOR
 - WILDLIFE TRACKS
 - WILDLIFE CORRIDOR
 - WILDLIFE TRACKS
 - WILDLIFE CORRIDOR
 - WILDLIFE TRACKS
- MODERN COMMUNITY HUB DROMANA PIER**
 - WILDLIFE CORRIDOR
 - WILDLIFE TRACKS
 - WILDLIFE CORRIDOR
 - WILDLIFE TRACKS
 - WILDLIFE CORRIDOR
 - WILDLIFE TRACKS

Graphical recording is a way to translate complex conversations into a visual medium that enhances the storytelling and clarity of discussions.



The Safety Beach Dromana Men's Shed welcomes all men to come and have a look at what we do at the shed. The main emphasis is looking after men's health, especially those who have lost their wife or partner and live on their own. We work on Community Projects as well as your own personal project.

Shed opening hours

9.00 a.m. to 12.00 noon Thursday:

9.00 a.m. to 12.00 noon

75A Pier Street Dromana. 3936



A very friendly club for people 50 years and over

Daily activities include

Monday: Concert practice, Bingo

Tuesday: Carpet Bowls, Art group and Line Dancing for beginners

Wednesday: Tai Chi , Yoga, Line Dancing. Arm Chair travel

Thursday: Gentle exercises, Marching, Carpet Bowls
Friday: Mentis group and Bingo

Concert Performers

Outings

Club Day and Lunch - Second Monday of the month

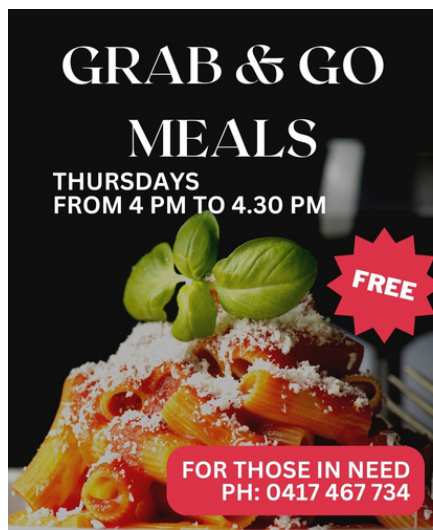
We would love to welcome you to our group.

43 Pier Street, Dromana 3936

Telephone: (03) 5987 1109

dromanaseniors@outlook.com

Dromana Community House is committed to reducing food waste and poverty.



SecondBite
Ending Waste. Ending Hunger.



Teresita's



TORELLO farm



Volunteers rescue food from Vinnies Kitchen, Coles McCrae, Dromana Aldi, Ritchies Dromana, Woolworths Bakeries, Torello, Baker's Delight, Pier Street Bakery, Frankston Fresh Market, Rotary Garden and local donations.

Contact Southern Peninsula Community Support Centre for
Emergency Relief and essential support Phone: **5986 1285**

Volunteer Opportunities

Our community is ready, willing and able to give back! Volunteering is a way to get to know your community and make a difference.



At Dromana Community House

- House keeper wanted on Friday Mornings.
- Receptionist wanted on Wednesday and Friday 12 noon to 2 pm
- Food Rescue wanted to pick up at Coles and Aldi weekly
- Cooking for Grab and Go and Food Share - Waitlist
- **Be Connected at the House**
Assisting Seniors with their phones, Ipads and computers
- **Boomerang Bags - Say no to plastic bags!**
Retailing at the Community Bank Southern Peninsula
Sales support Dromana
- Food Rescue and Share.- Wait list

Local Opportunity Shops

Retail, sorting or display, for a couple of hours per week!

The Rotary Club of Dromana

Looking for friends to help out on special events

Dromana Community Garden

Lend a hand mowing, weeding or whipper snipping
Tuesdays: 9 am to 1 pm and Second Sunday from 10 to 1.

MPSC Volunteer website

Volunteers from our local Secondary Colleges who are undertaking Certificate 11 in Active Volunteering are working in the Food Share Project.
Over 25 volunteers rescue food from:-
Coles McCrae ,Dromana Aldi, Ritchies Dromana,
Woolworths Bakeries, Torello, Baker's Delight ,
Pier Street Bakery, Bright Sparque, Dairy Lane and local gardens