

DROMANA
COMMUNITY HOUSE



Contact:

0499 213 924

dromanacommunityhouse@gmail.com

www.dromanacommunityhouse.com

Fifteen Gibson Street, Dromana 3936

Office hours:

Monday to Thursday 9 am to 2 pm



DROMANA
COMMUNITY HOUSE



**fifteen
Gibson street**

**Activities
February to April 2026**



Dromana Neighbourhood House acknowledges
and pays respect to the
Bunurong / BoonWurrung people, the
traditional custodians
of these lands, skies and waters.

About us

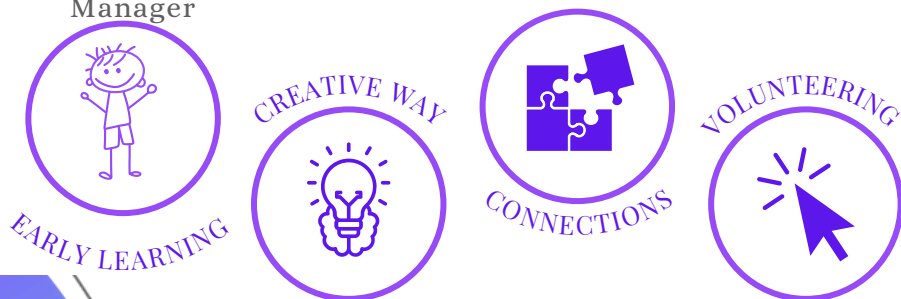
Find your way to participate at Fifteen Gibson street, perhaps in an activity to enjoy, improve your skills, socialise or to keep fit and healthy.

You may have skills to share, we would love to hear from you too!

Perhaps you are considering volunteering, we have a huge volunteer contingent that keep our activities and Neighbourhood House relevant, vital and alive.

We match your skills to a task and look at how we can empower you to return to work, to study or meet your passion for helping out in the community.

Tracey Trueman
Manager



Participate

Volunteers are encouraged to apply by emailing dromanacommunityhouse@gmail.com

Please ensure that you have a current and valid Working with Children Check.

- **SHARE A SKILL - LEAD AN ACTIVITY**

Do you have a skill you could share with others?

- **OFFICE AND RECEPTION**

Enhance your Skills through volunteering
Monday to Thursday 9am to 1pm

- **FOOD RESCUE**

We are looking for people to gather food from local sources.

- **COMMUNITY POD CAFE**

Assist in the café or with the take home meals.

- **COMMUNITY HELP**

Help others with computers

Be Connected

Every Australian online.

- **COMMITTEE**

Lynne Mc Kenzie - Chairperson
Danni De - Secretary
Chris Secloudis - Vice Chairperson
Bookkeeper - Drinan Consulting
Fundraising - Eileen Lambert
Community Liaison - Val Jarman



What's on

Monday

Little Gum Early Learning. 9 am to 2 pm

Family History, 9 am to 12 noon - \$5 per session

Community Pod Grab a snack , 12 to 1 pm- No cost for those in need!

Mahjong - Eyes down at 1.30pm \$5

Art studio - Oils and acrylics with Julie Hamilton, 1 pm to 4 pm

Tutoring for young people with the Lions Club 4 pm to 5 pm - No cost

Tuesday

Little Gum Early Learning, 9 am to 2 pm

Beachside Walkers, 9.30 am

Parkinson's Support, Fourth Tuesday of the month at 10.30 am

Morning tea, 10 30 am to 11 am

Community Pod - Take away - 12 to 1pm - No cost for those in need!

Watercolours with Beatrice Manoukian, 12 .30 to 3 pm - \$180

Tutoring for young people with the Lions Club, 4 pm to 5 pm

Wednesday

Little Gum Early Learning. 9 am to 2 pm

Hikers, starts at various locations around the Peninsula

Canva, Beginners and intermediate, Social Media and Mailchimp with Sarah Higgins

Mosaics four week workshop- 9.30 am to 11.30 am - \$65

Community Pod Cafe Lunch, 12 to 1 pm - No cost for those in need!

Hooks and Needles, 1 pm to 3 pm - \$3 per session

Craftyways - Fundraising projects - 1 pm to 3 pm

Boomerang Bags Sew Sustainable, 12 to 3 pm

OliV the library bus fortnightly, 1.30 to 5.30 pm

Lions Club of Dromana Meeting fortnightly at 7 pm

Thursday

Little Gum Early Learning. 9am to 2 pm

Food Relief at Pier street Clubrooms, 10 am to 10.30 am

Hospitality Essentials with Advance

Dromana Community House Singing Circle, 1.30 to 3 pm

Friday

Little Gum Early Learning. 9am to 2 pm

Armchair yoga - \$15

Digital Essentials with Advance - 9.30 am to 2.30 pm

<https://advance.vic.edu.au/computer-technology-2/>

Social Planet 



For the children





PHONE
0484 786 629

**CHILDCARE SUBSIDIES
MAY APPLY**



We're a little community treasure,
offering Occasional Childcare for up to
16 children, Monday to Friday,
9 am to 2 pm. Call 0484 786 629!
We're nestled right in the heart of the
Dromana Community , part of the big
friendly neighborhood family!

Sweet Gum Nature inspired play on Fridays

Starts:
13th Feb. 2026

- School term only
- Parents attend with the children

Time:
10 am to 11.30 am

Fee:
\$10 per session
\$14 per family

\$10
annual registration



School Holiday Fun coming up!

DROMANA
COMMUNITY HOUSE



PARKINSONS SUPPORT GROUP

We invite you to join our new support group, where you can meet with others
For carers too!

Fourth Tuesday of the month
starts
Tuesday 24th February

10 am to 11.30am

Entry by Donation
Morning tea provided

Help us shape the direction
of the group together!

We will work together to :-

- Meet with others for conversations and friendship
- Invite guest speakers
- Develop a kit of ideas worth keeping and local resources

For more information
dromanacommunityhouse.com

Coming up



Celebrate Belonging

NEIGHBOUR DAY

*Grab your sunglasses, hat and
sunscreen and join us in the back yard
at Fifteen Gibson street -let's enjoy the
sunshine together!*

12 NOON TO 3 PM
SUNDAY
29TH MARCH | 2026

There'll be games, music, laughter, and a Bar b
Que lunch . Friends and family welcome—just
let us know you're coming!
Looking forward to meeting you!

15 Gibson street, Dromana

RVSP to 0499 213 924

Comm Unity Food relief

- Grab a bag of fresh fruits, vegetables, and pantry essentials.
- Concession card holders are welcome.

All under cover at the Pier Street Sports Reserve.

Join us on Thursday
10:00 AM to 10:30 AM.



SecondBite
food for people in need



MORNINGTON
PENINSULA
Shire

VICTORIA
State Government

Families,
Fairness
and Housing

DROMANA
COMMUNITY HOUSE



fifteen
Gibson street



Community Bank
Southern Peninsula

Bendigo Bank



BRIGHT SPARQUE®
CARING FOR OUR COMMUNITY

FareShare
fighting hunger,
tackling food waste

For more information please visit :

www.dromanacommunityhouse.com

Phone: 0499 213 924

SOUTHERN
PENINSULA
COMMUNITY
SUPPORT

COMMUNITY
SUPPORT
FRANKSTON



MORNINGTON
COMMUNITY
SUPPORT
CENTRE



CAPEL SOUND
COMMUNITY HUB



RYE COMMUNITY
HOUSE

Dromana
Comm
Unity
House
**pod
cafe**

DROMANA
COMMUNITY HOUSE



fifteen
Gibson street

Monday and Wednesday
12 noon to 1 pm
Restarts in February 2026

We offer a complimentary, fresh, and nutritious meal to those who need it most. Additionally, the café has evolved into a gathering spot for individuals who may feel socially isolated, providing our community with the opportunity to share a meal and connect with one another.



Tuesday Take Away Meals

For those who need it!

Register please

12 noon to 1 pm

Pop up Cart

Saving food from landfill

9.30 am, 11.30 am and 3 pm



BRIGHT SPARQUE®
CARING FOR OUR COMMUNITY

Community Connections

**OLiV - Our Library Van, is coming to
Dromana Community House**
commencing fortnightly visits from February 11th, 2026
1.30 pm to 5.30 pm

Our Library Van (OLiV) will be within easy reach, offering something for everyone. You can browse, borrow, and return library items, as well as request and pick up holds at any one of our 16 stops across the Peninsula. While the van stays outside in our car park, all library services are delivered indoors at the Dromana community House, so you access library resources and services in comfort, no matter the weather.

Make borrowing even easier by selecting Library Van (MPLS) as your pick-up location when placing holds online. Your items will be available at any of our OLiV stops for the following 14 days once items are ready for collection.

All at Fifteen Gibson Street, Dromana

**"Help us
raise funds
and
contribute
to the
research"**



The Community Engagement for Disaster Risk Reduction (CEDRR) research project is led and run through the University of Melbourne.

The project aims to better understand perceptions and preparedness for flood risk.

Help Dromana Community House raise funds and contribute to the research

Sign up for a one-on-one conversation and the Dromana Community House is paid an incentive.

Simply click on the QR code below to register

Reminder to click on Dromana Community House so we receive the funds

Danni De. our volunteer is available on Wednesday afternoons to navigate this with you if needed!



Thank you!
Tracey Trueman
Manager



For more information please visit:
www.dromanacommunityhouse.com
Phone: 0499 213 924



We are a community based garden
based in
Marna Street, Dromana

We believe a garden is a place of
enjoyment sharing, connection and
learning.

Join us

Every Tuesday
8am to 1pm

Find us at
The Dromana Community Market
Last Sunday of the month

Phone

0417 467 734

dromanacommunitygarden@gmail.com
\$10 annual registration fee applies
Pay direct Bendigo Bank
Dromana Community Garden
BSB: 633000 Acc: 150129963

Dromana Community Market



Dromana Community Market



Dromana Community Market



**FOURTH SATURDAY
OF THE MONTH**

**DROMANA
COMMUNITY HOUSE**



Dromana Community Garden



Phone 0499 213 924

New activities coming up!

Mahjong

Though there are various adaptations available. The objective is to create winning combinations of tiles—sets of three or four and a pair—by drawing and discarding, much like rummy. This game combines skill, strategy, and luck.

Additionally, there is a well-known single-player variant called Mahjong Solitaire, where the focus is on clearing stacked tiles by matching open pairs.

Details:
Starts: Monday, 9th February 2026
Time: 1:15 PM to approximately 3:30 PM
Afternoon tea included
Cost: \$5 per session,
plus a \$10 annual registration fee.

All donations this week will go to the prevention of Domestic Violence

Mosaics

fifteen
Gibson street

PHONE: 0499 213 924

Over the course of 4 weeks Tanya will teach the class to make a bee bath. This is a decorative, shallow dish adorned with colourful tiles designed to provide a safe water source for bees and other pollinators.

Tutor: Tanya Quinlan
Insta - tq_beachside_mosaics

Dates & Time
Wednesday 25th Feb - 10am - 12pm
Wednesday 4th Feb - 10am - 12pm
Wednesday 11th Feb - 10am - 12pm
Wednesday 18th Feb - 10am - 12pm

Fees; \$65 investment
\$10 annual registration fee applies



**Community Houses
are**

**YOUR PLACE TO
CONNECT.**

**NHWeek
11th to 17th May**

Sustainable CommUnity



We aim to balance social, economic, and environmental needs for the well-being of present and future generations. Including resource efficiency, pollution reduction, food systems, with the community invested in decision-making.

The recycling trailer is in our car park over Easter for residents to drop off unwanted clothing and electrical items.



Our vegetable and fruit scraps are sent to the Dromana Community Garden



Return it -Bottles and Cans are dropped off and recycled at the depot Ten cents per item can be donated to Food Relief or we can reimburse you



We save fabric and sewing notions from landfill while promoting the use of sustainable bags made by volunteers.



Dromana Food Relief volunteers rescue and save 850 kg of food weekly. We purchase 600 kg per month from Food Bank



Second Bite deliver 750 kg weekly



We reuse 80 paper shopping bags weekly - drop yours off!

Outcomes: We share with 158 individuals on Thursdays
Bread/produce saved from landfill is shared in the street daily
We serve 40 three course meals at the cafe weekly
We now do Take away Tuesday and hope to build that in 2026

Partners



Dromana Community House are collaborating with Advance College. Our front garden received a delightful refresh with vegetables planted by students in 2025. This year, we welcome Bunnings Warehouse Rosebud and will install tables and bench seats, extra seating for an outdoor cafe experience.



Dromana Secondary College and Dromana Specialist College students actively participate in the Community Pod Food Relief initiative.



Legal assistance offered
Phone (03) 9783 3600



DROMANA ASSOCIATION
Building Community and Business

Community Event Calendar



Dromana Community House Inc

Make a Difference with Your Donation!

What You Can Donate:

- Cash donation
BSB : 633 000
Account : 150336 014
- Food
 - Pasta
 - Rice
 - Passata
 - Tuna
 - Tinned food
 - Tinned fruit
 - Home grown produce



Community Bank
Southern Peninsula

Drop off point:
Fifteen Gibson Street,
Dromana 3936



Supporting the Dromana Food Share Project
Providing food over 140 families weekly and saving food from landfill



DROMANA



Join Sarah Higgins for these Creative Workshops to drive your small business or community organisation

Sarah will lead you in setting up and designing a flyer, social media post, and documents using Canva, a free online tool.

In the afternoon, we will dive into intermediate Canva

Wed. 11th February 9.30 to 3.30 PM

Social Media & Mailchimp

Maximize your promotion through Social Media and engage members with exciting Newsletters in Mailchimp

Wed. 18th February 9:30 to 3:30 PM

What to Bring to the Workshops:

- Your laptop
- Information required for the flyer (e.g., text, images)
- Your logo, etc.

Cost per Workshop:

\$60 investment per day

PLUS registration fee of \$10 applies.



Families,
Fairness
and Housing



DROMANA
COMMUNITY HOUSE



fifteen
Gibson street



www.dromanacommunityhouse.com

Phone: 0499 213 924



Digital Essentials

RTO 4016

About this course

This introductory course provides participants with the opportunity to become familiar with the use of computing devices, operating systems and the Internet. Through guided exploration, you can learn to use technology in your personal and professional life. This course is suited to people with little or no experience.

The course content can be adapted based on the group's interests and objectives.

This is a pre-accredited course.

What you will learn

- Computer operating systems and applications
- Word processing
- Spreadsheets
- Multimedia presentations
- The Internet and online safety
- Online communications
- Social media
- Apps and software
- Everyday technology

Entry requirements

All participants must:

Be a minimum of 17 years of age;

Be an Australian or New Zealand citizen;

Not be attending school;

Be able to read, understand and interpret written information.

Delivery This course is delivered 1 day per week over 6 sessions from our Rosebud and Hastings campuses. Sessions run from 9:30am to 2:30pm.

Assessment

The assessment in this course involves non-formal classroom-based workshops and practical tasks. Upon successful completion, participants will be issued with a Certificate of Participation.

Fees

*Government subsidised concession fee: \$6.00

*Government subsidised tuition fee: \$32.00

**This course is subsidised by the Victorian Government through Adult, Community and Further Education (ACFE). Eligibility criteria apply.*

To be held at

Dromana Community House

15 Gibson street

Friday 13th February to Friday 20th March
2026.

9.30 am to 2.30 pm

Government subsidised concession fee: \$6.00

*Government subsidised tuition fee: \$32.00

\$10 DCH annual registration fee applies



6 Henry Wilson Drive, Rosebud | P: 59864623



DROMANA
COMMUNITY HOUSE



**Singing
Circle**



**FEE: \$5
PLUS
\$10 ANNUAL REGO,
15 GIBSON STREET**

**PHONE
0499 213 024**



Families,
Fairness
and Housing



Thursdays from 1:30 PM to 3:00 PM

Join us as we sing along to popular songs from our songbook, with Kate leading the way and Kev strumming the guitar. We're located right in the heart of Dromana, proudly a part of the big, friendly neighborhood family! We are also out and about performing

For more information please visit :

**www.dromanacommunityhouse.com
Phone: 0499 213 924**

DROMANA
COMMUNITY HOUSE



- Neighbourhood House Activities
- Dromana Community House - Little Gum Early Learning
- CommUnity Pod - Food Rescue, Educate and Share

Phone: 0499 213 924
dromanacommunityhouse@gmail.com
www.dromanacommunityhouse.com

Connect, Learn, Belong, Celebrate, Enjoy and Grow

